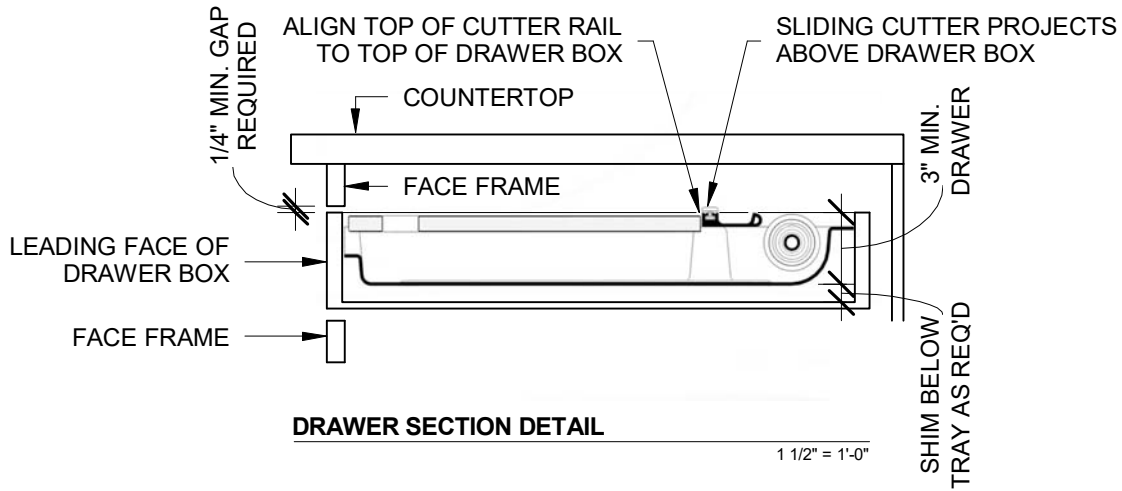


TRAY PLAN DETAIL

1 1/2" = 1'-0"

TRAY INSTALLATION NOTES:

1. CUT TRAY FACE-DOWN ON TABLE SAW USING PLASTIC-CUTTING BLADE
2. INSTALL PAINTERS TAPE ON FACE OF TRAY TO PROTECT FROM SCRATCHING AND CHIPPING
3. INSTALL PROVIDED BOSSES INTO PRE-DRILLED HOLES AFTER CUTTING



DRAWER SECTION DETAIL

1 1/2" = 1'-0"

INSTALLATION NOTES:

1. HEIGHT OF ASSEMBLED FOOD WRAPPING STATION = 3", FROM BOTTOM OF TRAY TO TOP OF CUTTER RAIL.
2. IT IS RECOMMENDED TO ALIGN TOP EDGE OF CUTTER RAIL TO TOP EDGE OF DRAWER BOX FOR BEST APPEARANCE.
3. MINIMUM 1/4" GAP BETWEEN TOP EDGE OF DRAWER BOX AND BOTTOM EDGE OF FACE FRAME IS REQUIRED TO ALLOW FOR CLEARANCE OF SLIDING CUTTER.
4. FULL EXTENSION DRAWER GLIDES ARE REQUIRED.
5. THE FOOD WRAPPING STATION CAN REST IN THE BOTTOM OF A DEEPER DRAWER AND STILL OPERATE.

Revision Date:

9/24/24

**The Fast-wrap
Premier**

U.S. Patent #10,538,405 &
Other Patents Pending

The Fast-wrap
9040 Town Center Pkwy
Lakewood Ranch, FL 34202

© 2024 Antony Stefan Architect, PLLC DBA The Fast-wrap

